

# AIRPORT DIRECTORY - MIAMI AREA

| CITY            | AIRPORT                   | NORTH | EAST  | ALT. F | ILS<br>(Rwy/Freq) |
|-----------------|---------------------------|-------|-------|--------|-------------------|
| Ft Lauderdale   | Ft Lauderdale Exec        | 10532 | 19650 | 14     |                   |
| Ft Myers        | Page Fld                  | 10651 | 18984 | 18     |                   |
| Ft Myers        | SW Florida Regional       | 10634 | 19027 | 31     |                   |
| Ft Pierce       | St. Lucia Co. Int'l       | 11083 | 19528 | 24     |                   |
| Frostproof      | River Ranch Resort        | 11184 | 19200 | 55     |                   |
| Homestead       | Homestead General         | 10223 | 19528 | 9      |                   |
| Immokalee       | Immokalee                 | 10599 | 19167 | 37     |                   |
| Key West        | Key West Int'l            | 9779  | 19085 | 4      |                   |
| Key West        | NAS Key West              | 9790  | 19114 | 6      | *                 |
| La Belle        | La Belle                  | 10732 | 19147 | 18     |                   |
| Lakeland        | Lakeland Muni             | 11254 | 18885 | 142    |                   |
| Lake Wales      | Lake Wales Muni           | 11220 | 19039 | 125    |                   |
| Marathon        | Marathon                  | 9873  | 19356 | 6      |                   |
| Marco Island    | Marco                     | 10402 | 19075 | 6      |                   |
| Miami           | Miami Int'l               | 10357 | 19615 | 10     | * 109.1/27R       |
| Miami, Hialeah  | Opa Locka West            | 10419 | 19561 | 8      | *                 |
| Miami           | Tamiami                   | 10288 | 19569 | 10     |                   |
| Naples          | Naples Muni               | 10468 | 19028 | 9      |                   |
| Okeechobee      | Okeechobee Co.            | 10970 | 19354 | 34     |                   |
| Pahokee         | Palm Beach Co. Glades     | 10770 | 19429 | 17     |                   |
| Pompano Beach   | Pompano Beach Airpark     | 10558 | 19674 | 20     |                   |
| Punta Gorda     | Charlotte Co.             | 10791 | 18922 | 25     |                   |
| St. Petersburg  | Clearwater Int'l          | 11205 | 18630 | 11     |                   |
| Sarasota        | Sarasota-Bradenton        | 10983 | 18696 | 28     |                   |
| Sebring         | Sebring Airport/Ind. Park | 11041 | 19160 | 63     |                   |
| Tampa           | Tampa Int'l               | 11240 | 18690 | 27     | *                 |
| Tampa           | MacDill AFB               | 11186 | 18704 | 14     |                   |
| Venice          | Venice Muni               | 10845 | 18748 | 19     |                   |
| Vero Beach      | Vero Beach Muni           | 11154 | 19505 | 25     | *                 |
| West Palm Beach | West Palm Beach Int'l     | 10746 | 19662 | 19     | * 109.3/9L        |
|                 | ATIS 123.75               |       |       |        |                   |
| Winter Haven    | Bartow Muni               | 11241 | 18979 | 128    |                   |

## BAHAMAS

|               |                     |       |       |    |   |
|---------------|---------------------|-------|-------|----|---|
| Congo         | Congo Town          | 9749  | 20746 | 15 |   |
| Freeport      | Freeport Int'l      | 10737 | 20209 | 7  | * |
| Grand Bahama  | Grand Bahama Aux AF | 10782 | 20338 | 9  |   |
| Marsh Harbour | Marsh Harbour       | 10783 | 20830 | 10 |   |
| Nassau        | Nassau Int'l        | 10136 | 20749 | 10 | * |
| South Bimini  | South Bimini        | 10350 | 20020 | 10 |   |
| Treasure Cay  | Treasure Cay        | 10871 | 20702 | 11 |   |

## LEGEND



Civil-Public use airport

SANTA MONICA  
ATIS 119.15  
175-50

Airport Name  
Advisory Frequency (if available)  
Elevation (feet) — Length (hundreds of feet)

NAME  
FREQUENCY



VOR

NAME  
FREQUENCY



VORTAC (Distance Measuring Equipment Able)

NAME  
FREQUENCY



VOR/DME

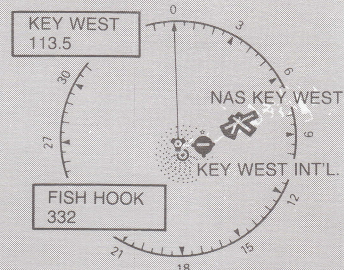
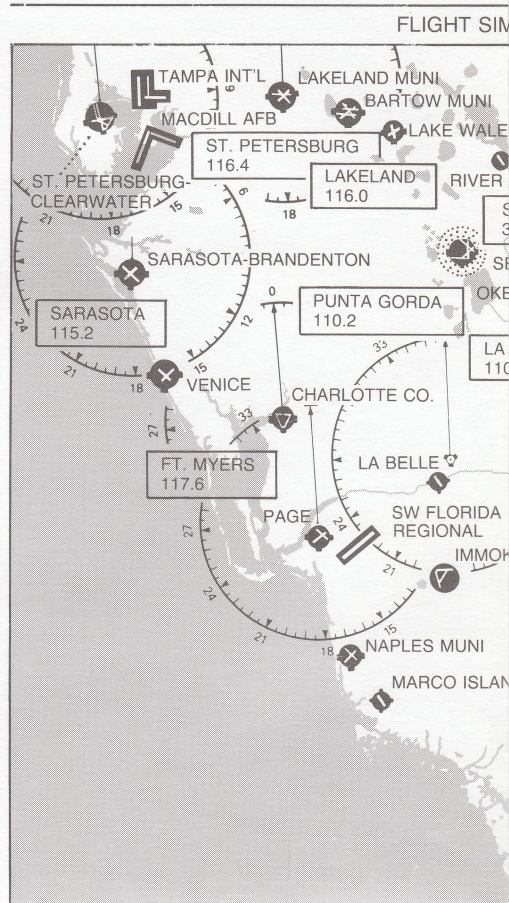
NAME  
FREQUENCY



Non Directional Beacon

VOR/DME  
NAME  
FREQUENCY

If VOR falls directly on an airport, only the airport symbol will be shown. The VOR facility type is shown at the top of the box.



Nautical Miles 0 10 20 30 40 50  
Statute Miles 0 10 20 30 40 50

North and east coordinates are canted at + 5° (clockwise) to compensate for orthogonal coordinate grid overlaid on Lambert conformal conic projection.



# MIAMI AREA CHART

ULATOR II REFERENCE CHART. NOT TO BE USED FOR REAL WORLD AERIAL NAVIGATION.

